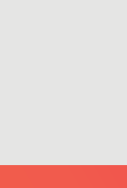


# Litecoin (LTC)

Deposit and withdraw in Litecoin, a durable cryptocurrency with fast transaction processing.



### Processing time

Deposits:  
Funds available as soon as confirmed

Withdrawals:  
Subject to internal checks



### Min deposit

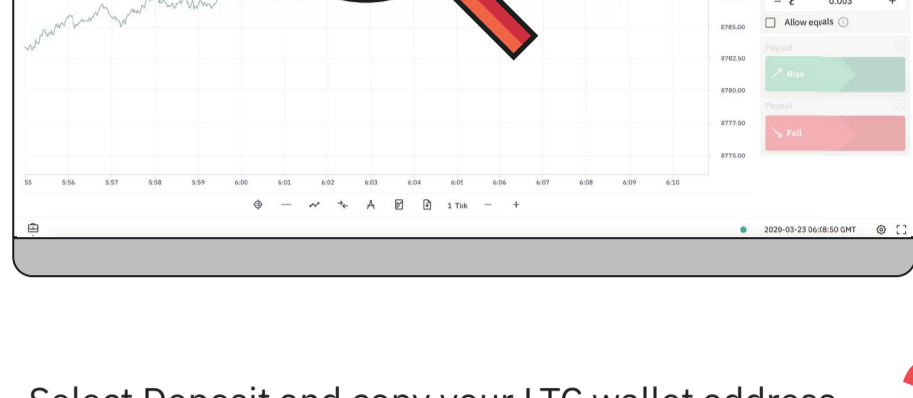
No minimum

### Min withdrawal

Equivalent to 5 USD

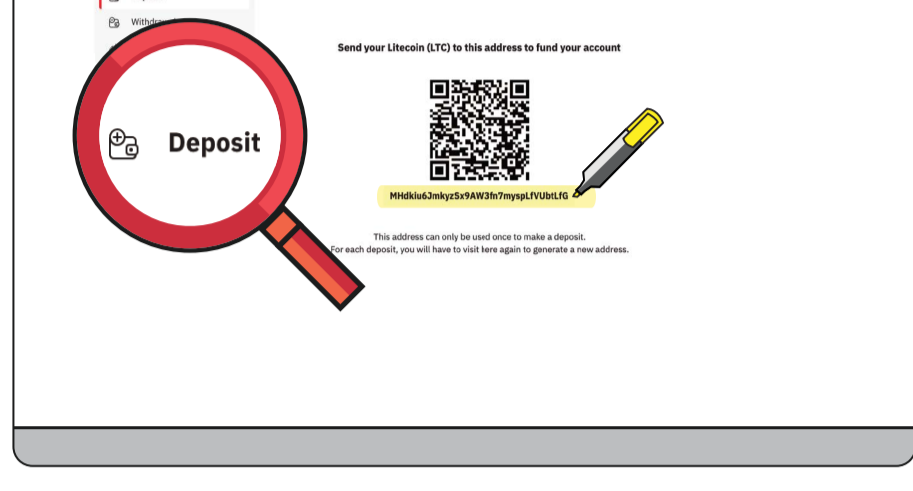
## How to make a deposit

**Step 1** Log in to your Deriv LTC account and go to Cashier.

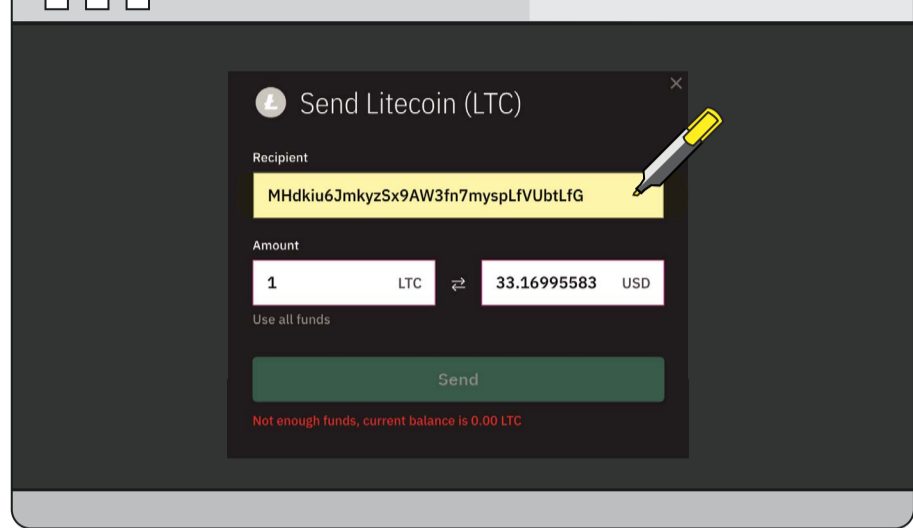


Select Deposit and copy your LTC wallet address.

**Step 2**

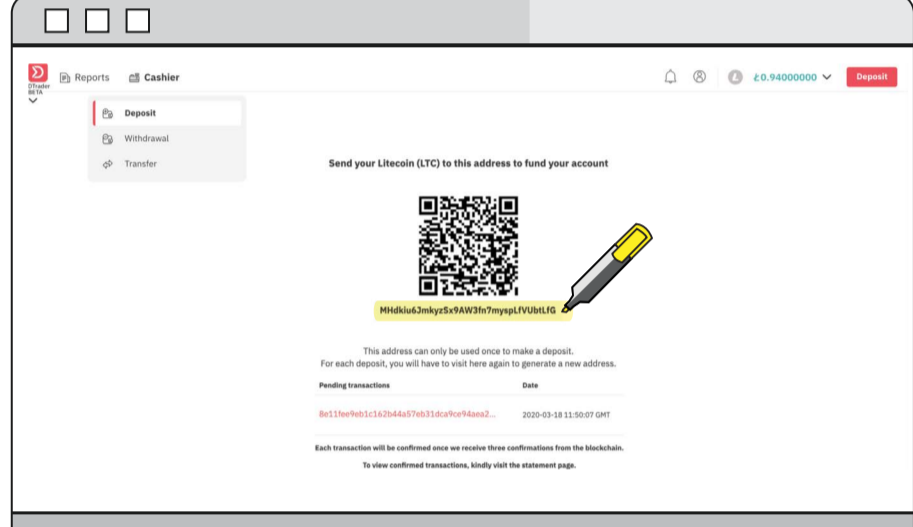


**Step 3** Paste your LTC wallet address into your blockchain wallet as shown below.



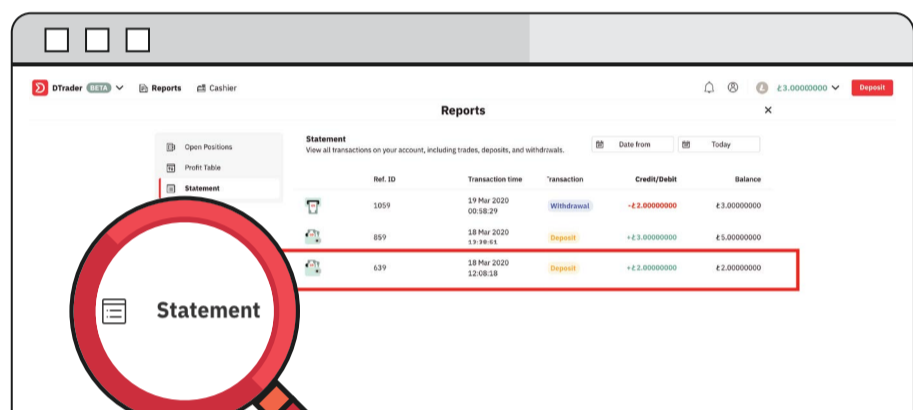
You will then see the transaction as pending. Your funds will be deposited into your LTC account as soon as confirmed.

**Step 4**



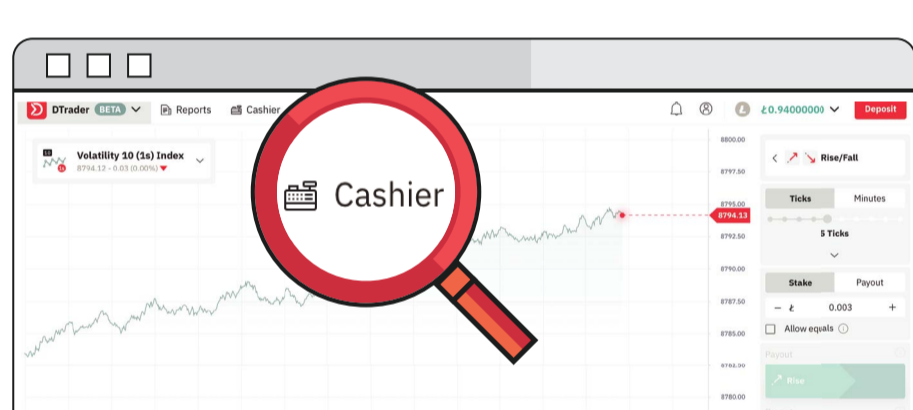
You can view the successful deposit in your Deriv account statement.

**Step 5**



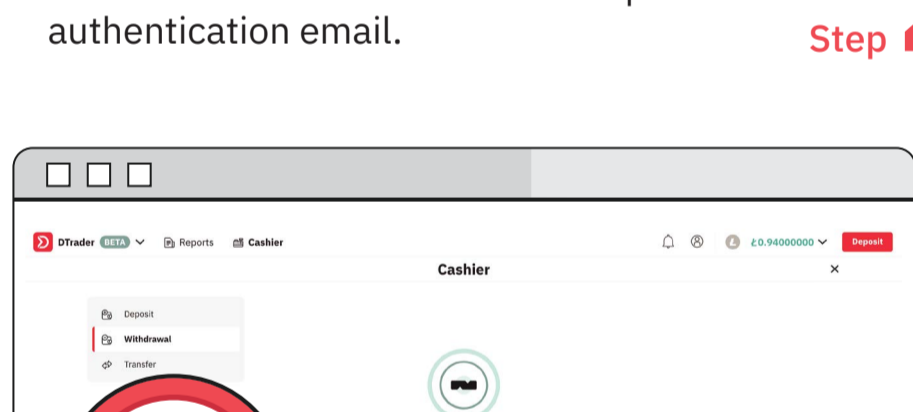
## How to make a withdrawal

**Step 1** Log in to your Deriv LTC account and go to Cashier.



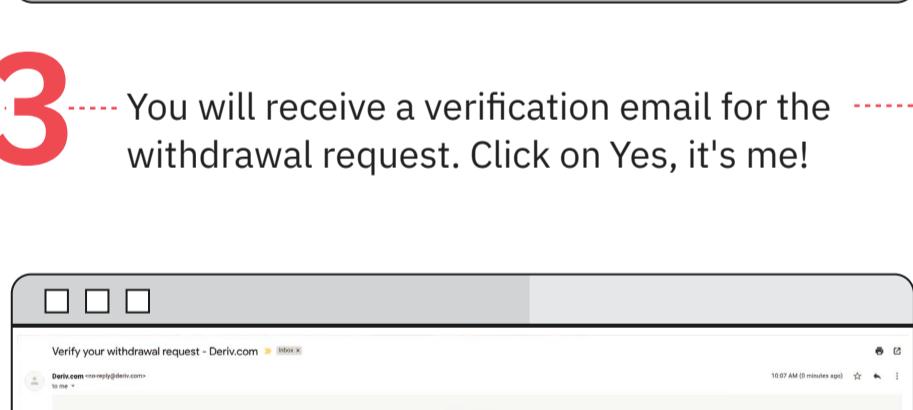
Select Withdrawal and click on Request authentication email.

**Step 2**



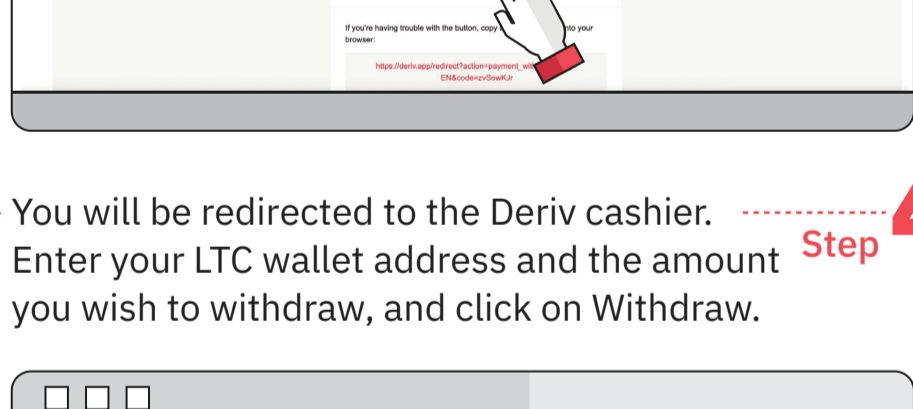
You will receive a verification email for the withdrawal request. Click on Yes, it's me!

**Step 3**



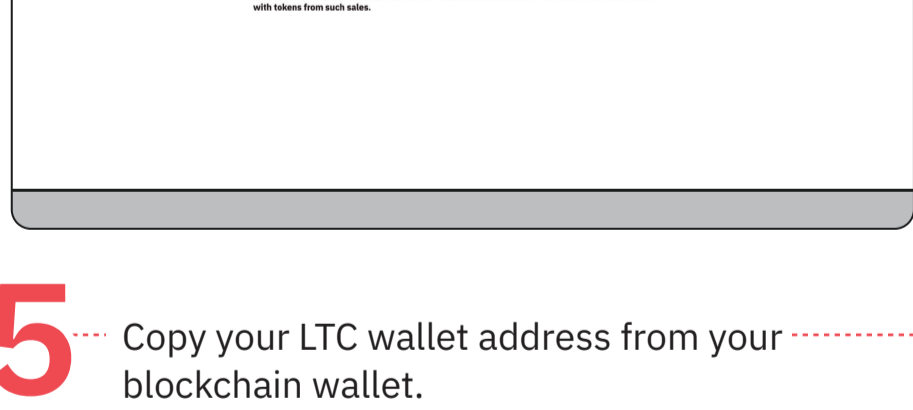
You will be redirected to the Deriv cashier. Enter your LTC wallet address and the amount you wish to withdraw, and click on Withdraw.

**Step 4**



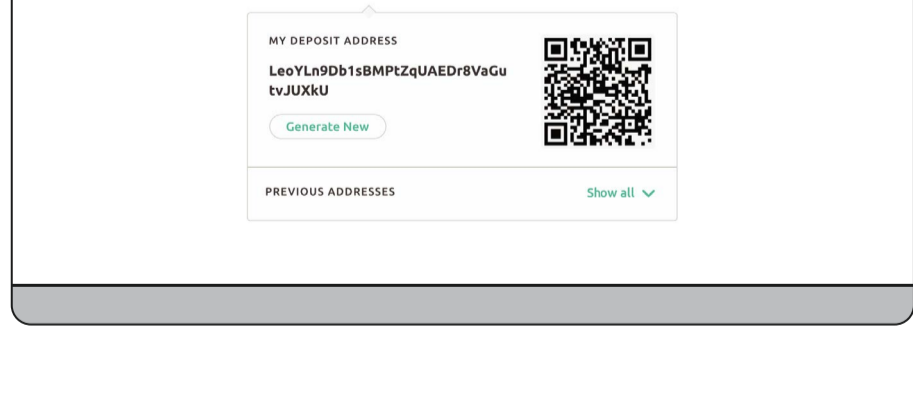
Copy your LTC wallet address from your blockchain wallet.

**Step 5**



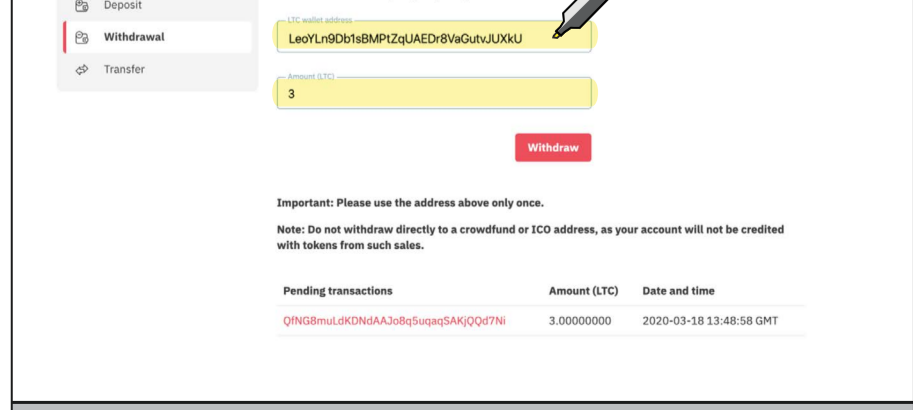
You will then see the transaction as pending. The processing of your funds is subject to internal checks.

**Step 6**



You can view the successful withdrawal in your Deriv account statement.

**Step 7**



For assistance, email us at [support@deriv.com](mailto:support@deriv.com).

Processing times and limits are indicative. They may differ from what is shown here, depending on the queue or for reasons outside of our control. The account information in this material is test content for your reference only. Please use your own Deriv account and LTC wallet address.